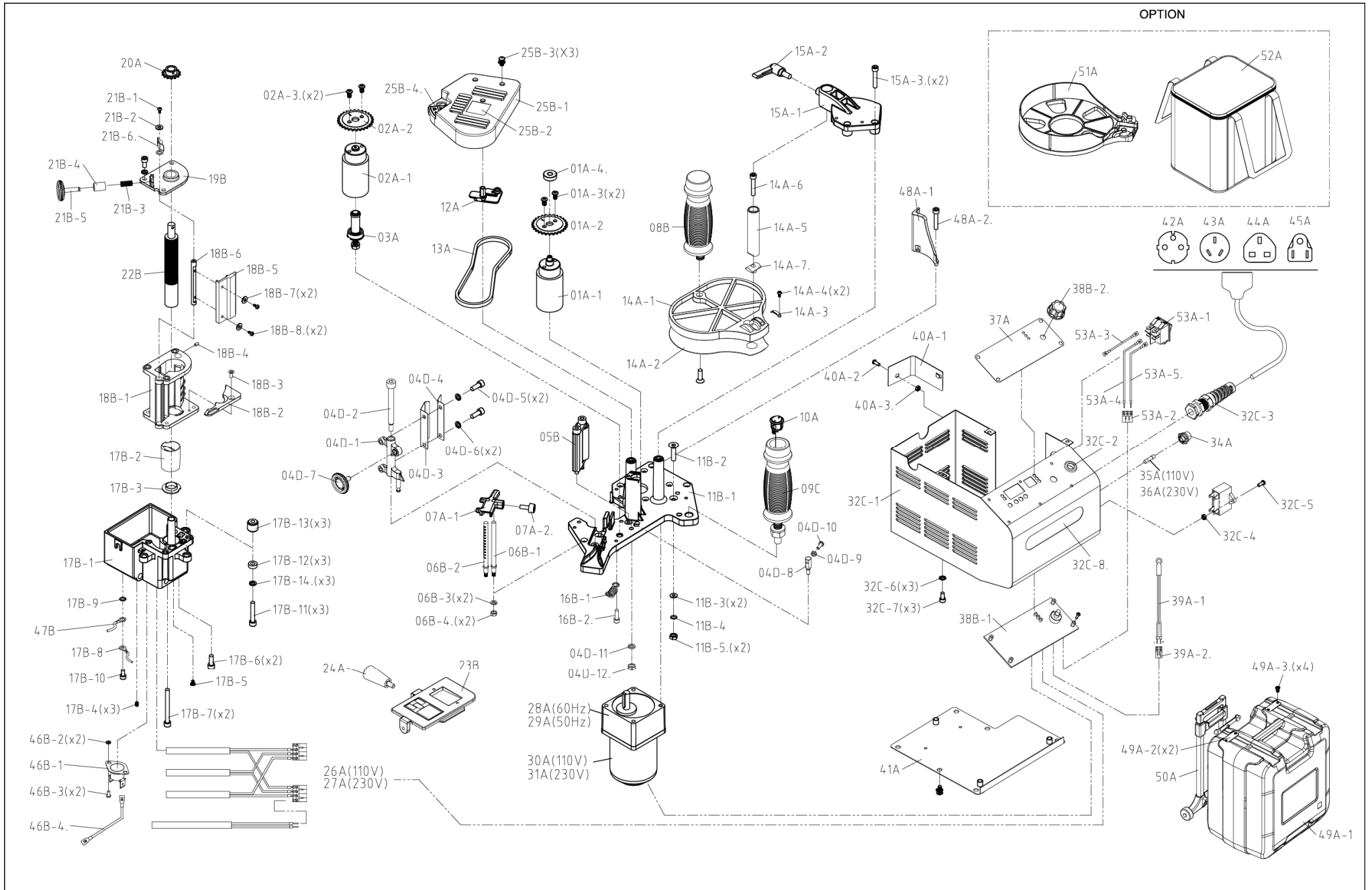


● EXPLODED VIEW



● PARTS LIST

Part No.	Code No.	Description	Q'ty	Part No.	Code No.	Description	Q'ty	Part No.	Code No.	Description	Q'ty
01A	01A	Press Roller Assb.	1	06B-1	G320217	Front Adjustment Support	1	14A-7.	A600007	Slide	1
01A-1	C020071	Press Roller	1	06B-2	G320292	Front Adjustment Support	1	15A	15A	Sliding Plate Support Assb	1
01A-2	A500003	Sprocket	1	06B-3	N030005	Spring Washer	2	15A-1	C020076	Sliding Plate Support	1
01A-3	S300610	Cap Screw	2	06B-4.	N11005R	Nut	2	15A-2	T060008	Pull Handle	1
01A-4.	B08608-ZZ	Bearing	1	07A	07A	Front Adjustment Support Assb.	1	15A-3.	S900625	Cap Screw	2
02A	02A	Feed Roller Assb.	1	07A-1	U010112	Front Adjustment Support	1	16B	16B	Spring Assb.	1
02A-1	C020072	Feed Roller	1	07A-2.	U010039	Screw	1	16B-1	N910005	Spring	1
02A-2	A500003	Sprocket	1	08B	08B	Hand Grip Assb.	1	16B-2.	S900516	Cap Screw	1
02A-3.	S300610	Cap Screw	2	09C	09C	Joystick Assb.	1	17B	17B	Glue Pot Assb.	1
03A	03A	Feed Roller Shaft Assb.	1	10A	J910093A	Joystick Switch	1	17B-1	C020073	Glue Pot	1
04D	04D	Pressing Plate Assembly	1	11B	11B	Main Frame Assb.	1	17B-2	C020083	Spiral Tube	1
04D-1	C020077	Thickness adjusting base	1	11B-1	C020070	Main Frame	1	17B-3	A510002	Bottom Sintered Bushing	1
04D-2	G000057	Thickness adjusting shaft	1	11B-2	S200525-001	Cap Screw	1	17B-4	S100406	Screw	3
04D-3	G150036	Rear pressing plate	1	11B-3	N010510	Lock Washer	2	17B-5	S300405	Cap Screw	1
04D-4	G150038	Pressing plate	1	11B-4	N050005	Zinc Lock Washer	1	17B-6	S900616	Cap Screw	2
04D-5	S9000612	Cap Screw	2	11B-5.	N11005C	N11005C	2	17B-7	S900680	Cap Screw	2
04D-6	N030006	Spring Washer	2	12A	12A	Chain Adjusting Chip Assb.	1	17B-8	J910077	Grounding Wire	1
04D-7	U010288	KNOB M6x14L	1	13A	K320072	Chain	1	17B-9	N050005	Zinc Sprocket Washer	1
04D-8	G080017	Positioning screw	1	14A	14A	Sliding Plate Assb.	1	17B-10	S900510	Cap Screw	1
04D-9	N11004R	Nut M4	1	14A-1	C020079	Sliding Plate	1	17B-11	S900632	Cap Screw	3
04D-10	G000031	Adjusting screw	1	14A-2	U010165	PVC Plate	1	17B-12	U010094	Bakelite Washer	3
04D-11	N030006	Spring Washer	1	14A-3	P200070	Scale Chip	1	17B-13	U010292	Insulation Spacer	3
04D-12.	N11006R	Nut M6	1	14A-4	S500304	Cap Screw	2	17B-14.	N030006	Spring Washer	3
05B	05B	Roller Support Assb.	1	14A-5	G320219	Elevating Rod	1	18B	18B	Gluing Base Assb.	1
06B	06B	Front Adjustment Shaft Assb.	1	14A-6	G000058	Screw	1	18B-1	C020111	Gluing Base	1

Part No.	Code No.	Description	Q'ty	Part No.	Code No.	Description	Q'ty	Part No.	Code No.	Description	Q'ty
18B-2	C020112	Metal Plate	1	27A	27A	Heating Unit-230V	1	38B-1	J011223	Panel	1
18B-3	S200408	Cap Screw	1	28A	K016601A	Gear Reduction	1	38B-2.	U010264	knob	1
18B-4	S100406	Screw	1	29A	K016501A	Gear Reduction	1	39A	39A	Thermocouple Assb.	1
18B-5	C020081	Main Scraper Plate	1	30A	M021161A-103	Motor 15w 110V	1	39A-1	J910090	Thermocouple	1
18B-6	G320218	Scraper Support Pin	1	31A	M022351A-103	Motor 15w 230V	1	39A-2.	J530204	Euro Terminal block P3.5x2H	1
18B-7	N010412	Zinc Flat Washer	2	32C	32C	Housing Assb.	1	40A	40A	Housing Guard Assb.	1
18B-8.	S300408	Cap Screw	2	32C-1	G110273	Housing	1	40A-1	G110174	Housing Guard	1
19B	19B	Metal Cover Assb	1	32C-2	J510003	Power Cord Holder	1	40A-2	S800408	PH. Screw	1
20A	20A	Sprocket Assb.	1	32C-3	J530004	Clamp	1	40A-3.	N11004R	Nut	1
21B	21B	Scraper Adjustment Assb .	1	32C-4	N11004R	Nut	1	41A	41A	Base Cover	1
21B-1	S300506	Cap Screw	1	32C-5	S800412	Cap Screw	1	42A	J624541	Power Cord	1
21B-2	N040005	Lock Washer	1	32C-6	N050005	Zinc Sprocket Washer	3	43A	J624543	Power Cord	1
21B-3	N930016	Spring	1	32C-7	S900510	Cap Screw	3	44A	J624553	Power Cord	1
21B-4	U010241	Washer	1	32C-8.	P200122	Namec Plate	1	45A	J624542	Power Cord	1
21B-5	U010266	Knob	1	53A	53A	Power Switch Assb.	1	46B	46B	Temperature Control Switch Assb.	1
21B-6.	G810004	Scraper Support Pin	1	53A-1	J110014	Power Switch	1	46B-1	J380006	Temperature Control Switch	1
22B	G320281	Gluing Shaft	1	53A-2	J530202	Euro Terminal block	1	46B-2	N010306	Washer	2
23B	23B	Glue Pot Cover Assb.	1	53A-3	J910044	Heat Resistant Wire.-white	1	46B-3	S500306	Cap Screw	2
24A	U010164	Lock Handle	1	53A-4	J910088	Heat Resistant Wire	1	46B-4.	J910096	Heat Resistant Wire	1
25B	25B	Top Ventilated Cover Assb.	1	53A-5.	J910097	Heat Resistant Wire	1	47B	J910009	Grounding Wire	1
25B-1	U010168	Top Ventilated Cover	1	34A	J550010	Fuse Bracket	1	48A	48A	Corner Guiding plate set	1
25B-2	P200046	Warning Plate	1	35A	J340009	Fuse-	1	48A-1	U010282	Corner Guiding plate	1
25B-3	S330512	Cover Screw	3	36A	J340006	Fuse	1	48A-2.	S900620	Cap Screw	1
25B-4.	P200111	Warning Plate	1	37A	P340389	Control Panel	1	49A	49A	Cruiser Case Assb	1
26A	26A	Heating Unit-110V	1	38B	38B	Panel Assb.100V-240V	1	49A-1	U010193	Cruiser Case	1

Circuit diagram

